



ISTATION RECEIVER BOARD (4400RF PLL) PROGRAMMING

1st:

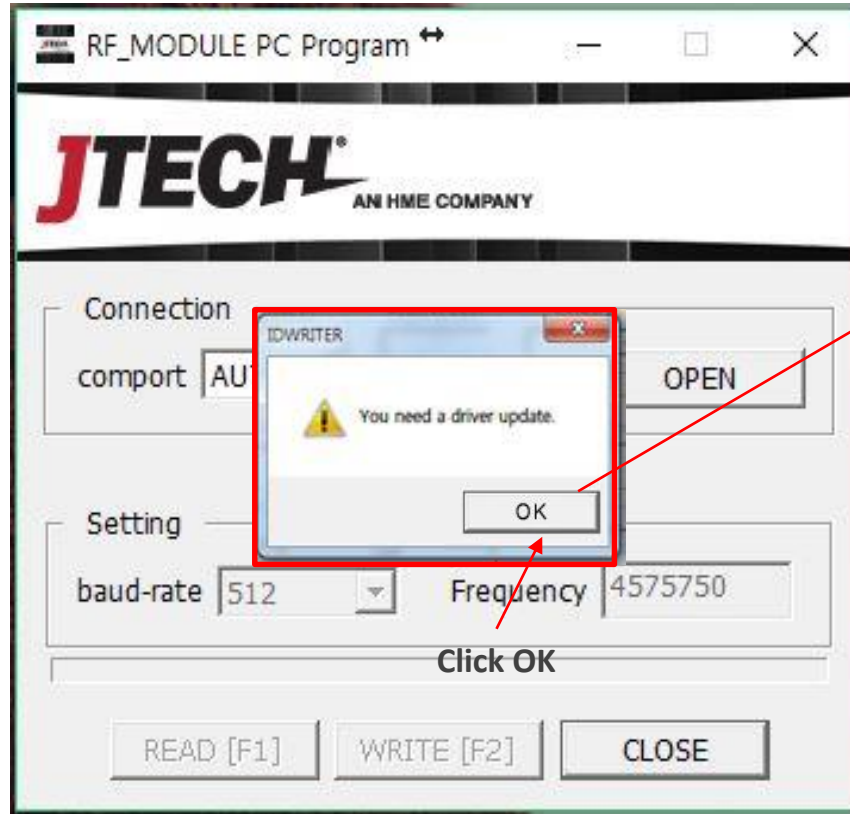
Connect the ID Writer (ACCPRG) v-20 into a PC USB port.

The Jig tool will show its version for a second and go to Stnd



2nd:

Run RF_MODULE PC Program, PC program will ask to install the driver, click OK.

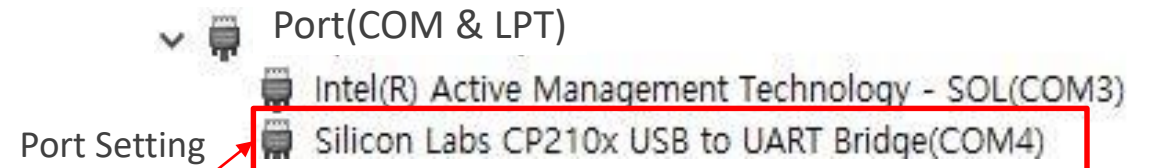


Click "Next"



Click "Finish"

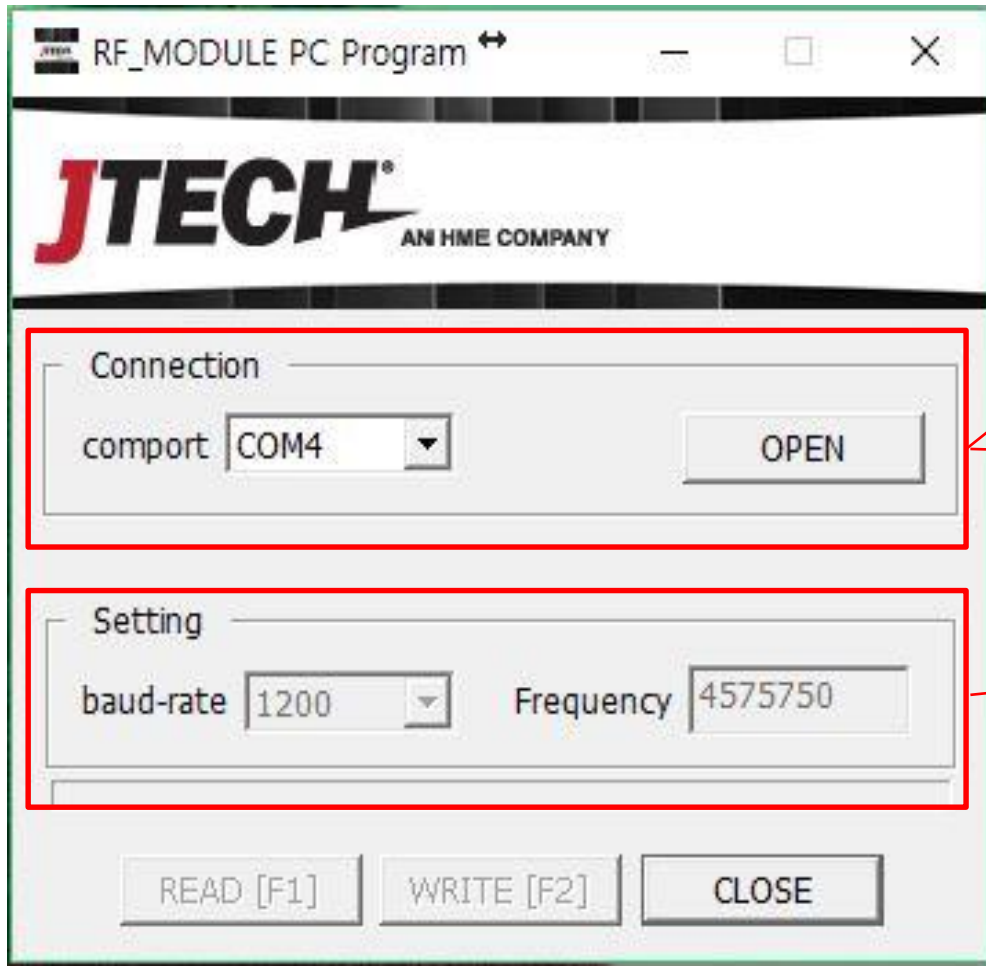
Device Manager

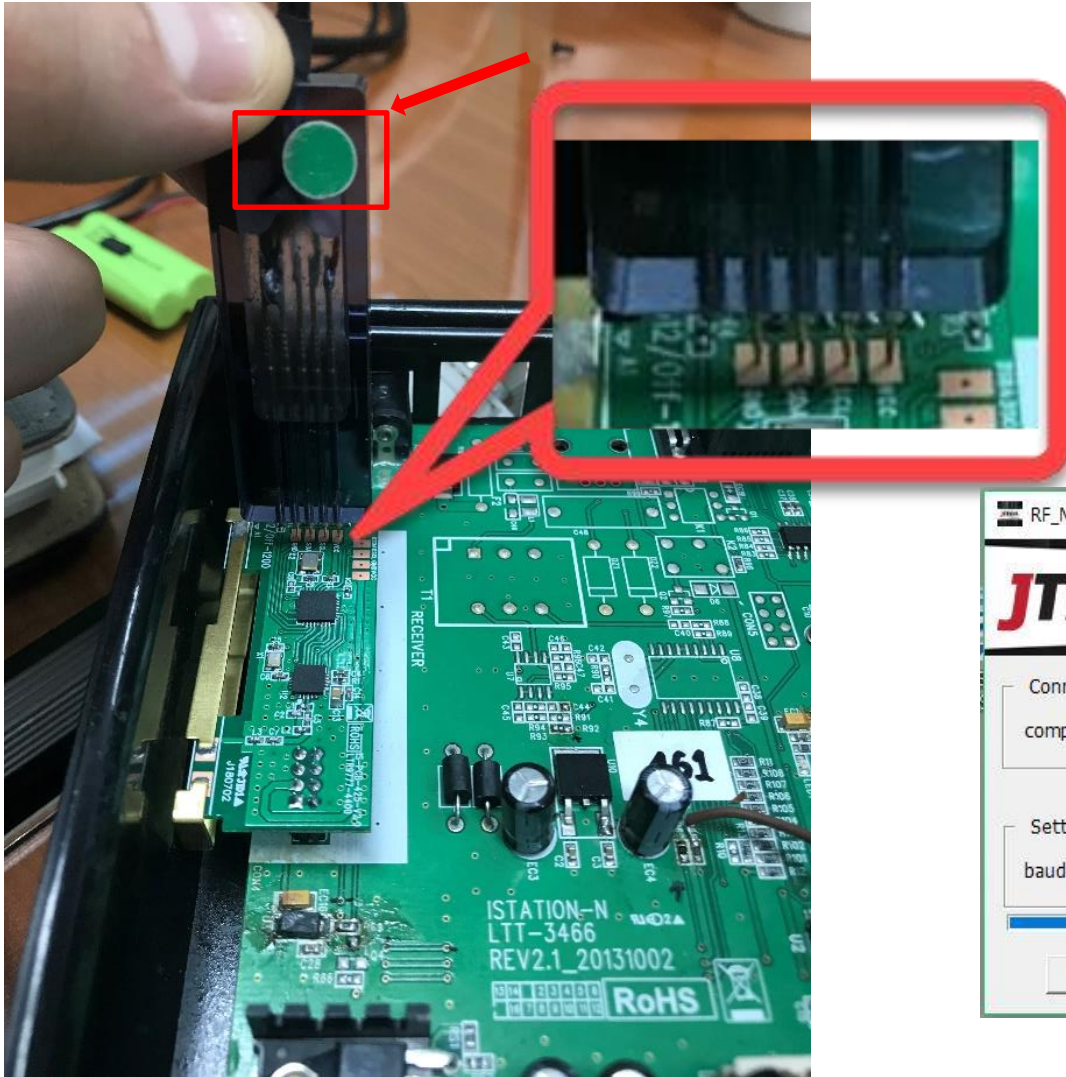


1 Connection : (CP2102 , VCP) Select port # that matches the one shown in Device Manager

2 Available Settings:

- baud-rate: 512 or 1200
- Frequency: 420 - 470 MHz

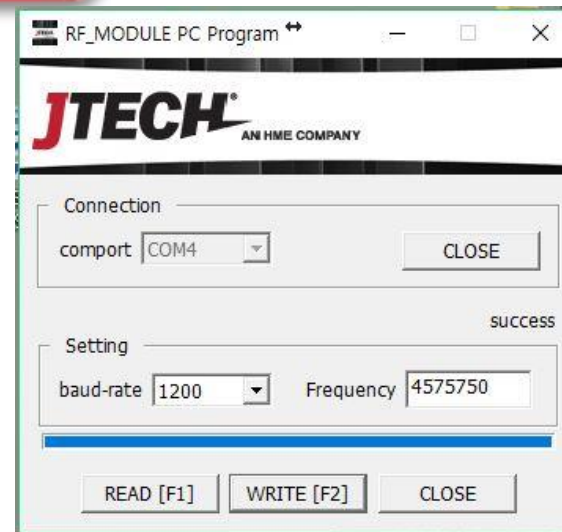




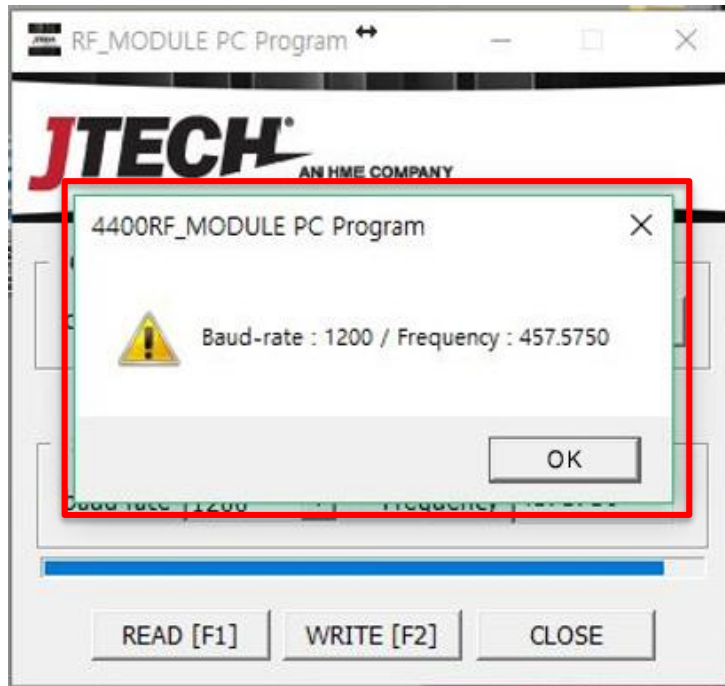
IMPORTANT:

DO NOT plug the power adaptor into the IStation while programming the RF board.

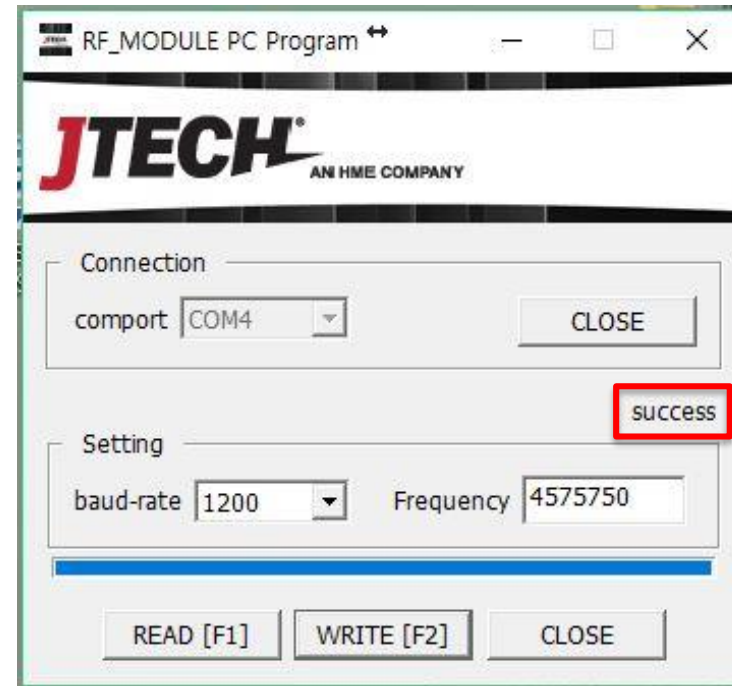
1. Having the side with mark/green dot/arrow label facing you, push down the jig pins firmly on the contacts.
2. To see programmed baud-rate and frequency click on the “Read” button or Shortcut Key: F1 (a window with the information will pop up).
3. Select the desired Baud rate and Frequency, Click the “Write” button (or Shortcut Key: F2) to program the baud-rate and frequency.



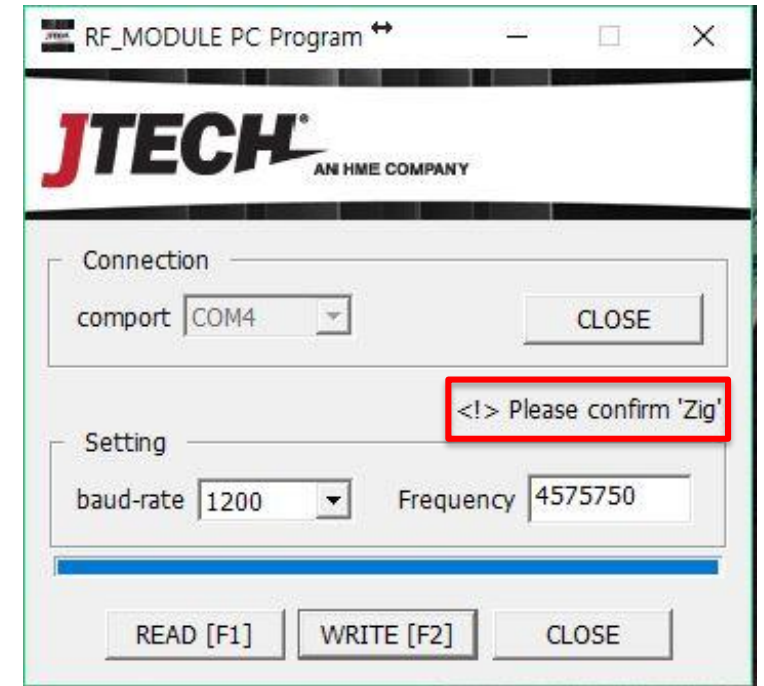
- Read Success



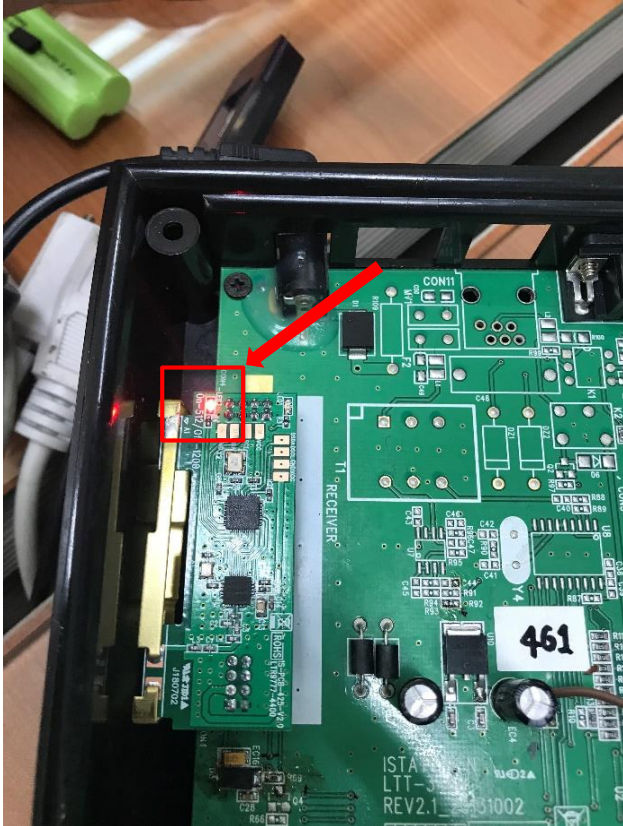
- Write Success



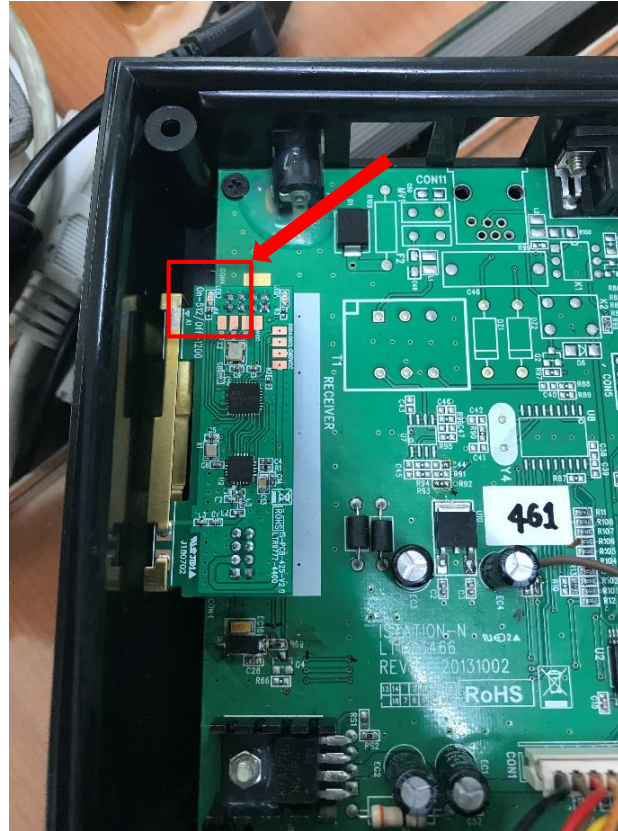
- Read/Write Fail



- LED2 turns on when Baud-rate is set to 512



- LED2 turns off when Baud-rate is set to 1200



- LED1 flashes when there is incoming signal

